



Staged Backup/Import

"NovaStor xSP 19"

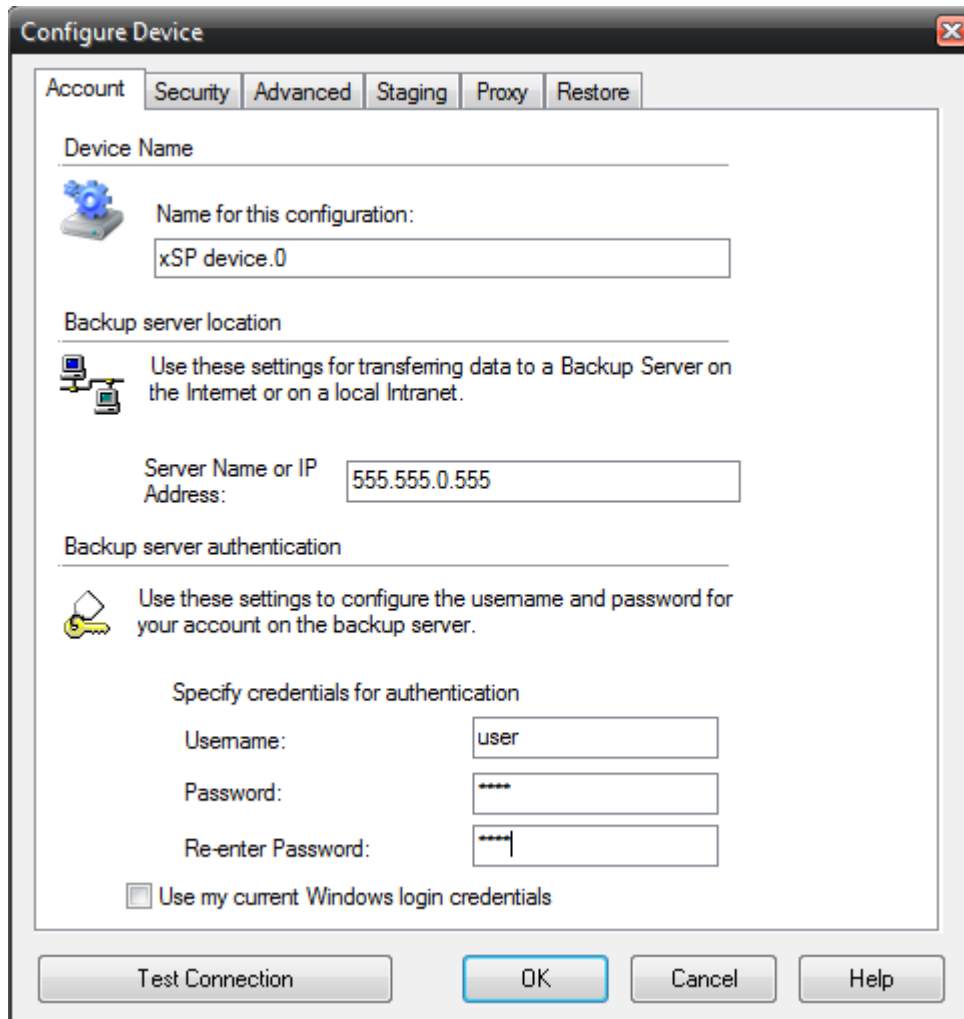
Guide to creating a staged backup.....	3
Import.....	6
Backup Import Utility	6
Complete.....	8
Contact Us.....	9
Notice.....	9
Copyright.....	9

Guide to creating a staged backup

This document is going to show you how to perform a Staged Backup on the client for the xSP device and how to import it to the Storage Server. This function is most useful for very large backups that the initial backup you do not want to go over the wire.

Please read this entire guide before beginning any staged backup.

1. Setup the user on the Storage Server.
2. [Install] and setup the xSP device on the client computer.
3. In the xSP Configure device settings, Enter the Server name, username, and password.



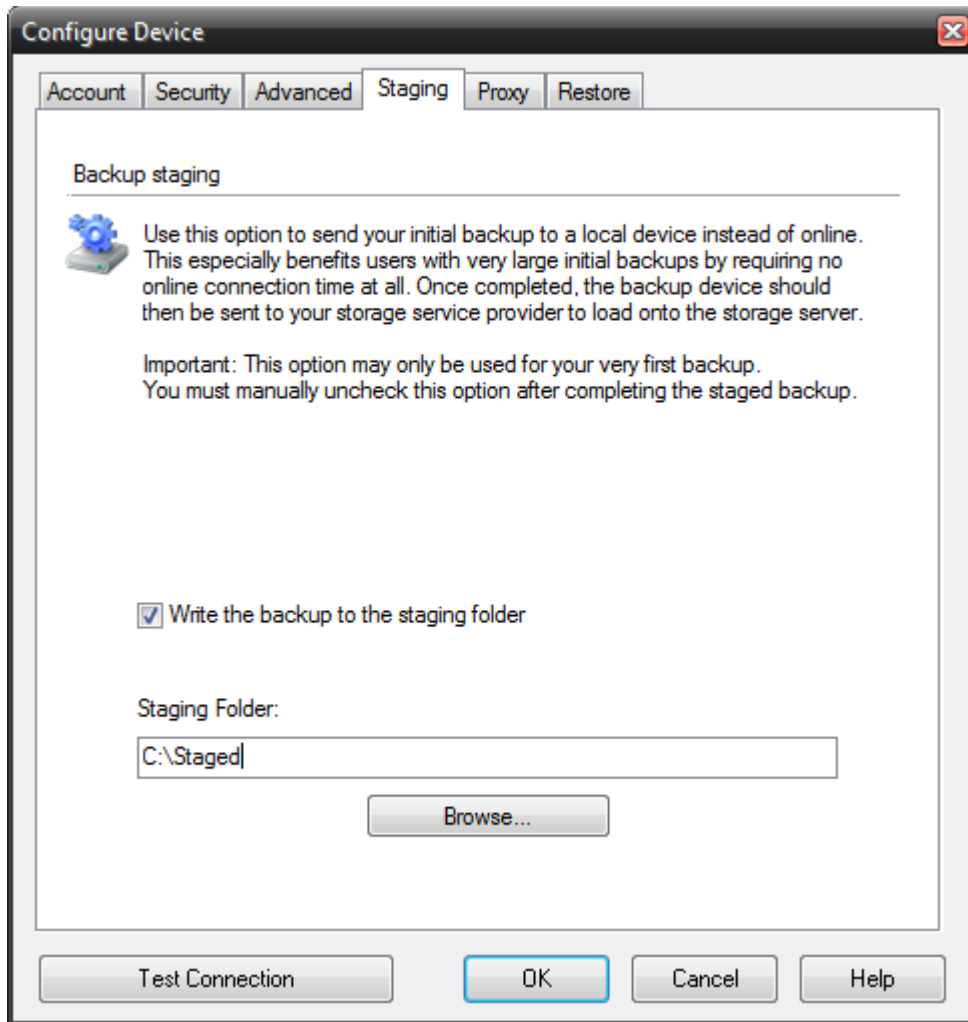
The screenshot shows a Windows-style dialog box titled "Configure Device" with a close button in the top right corner. The dialog has several tabs: "Account" (selected), "Security", "Advanced", "Staging", "Proxy", and "Restore".

Under the "Account" tab, there are three sections:

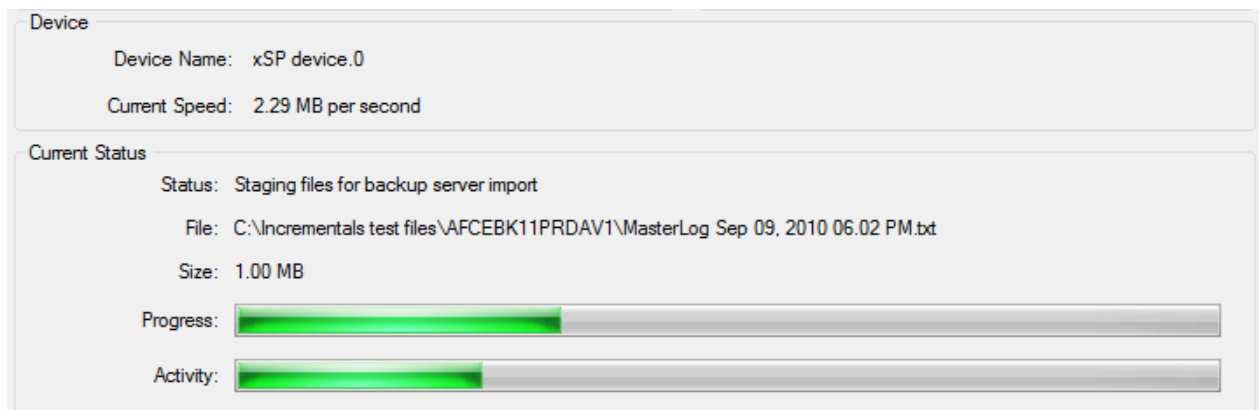
- Device Name:** A text box labeled "Name for this configuration:" containing the text "xSP device.0".
- Backup server location:** A text box labeled "Server Name or IP Address:" containing the IP address "555.555.0.555".
- Backup server authentication:** A section with a key icon and the text "Use these settings to configure the username and password for your account on the backup server." It includes three text boxes: "Username:" with "user", "Password:" with "****", and "Re-enter Password:" with "****". Below these is a checkbox labeled "Use my current Windows login credentials" which is currently unchecked.

At the bottom of the dialog, there are four buttons: "Test Connection", "OK", "Cancel", and "Help".

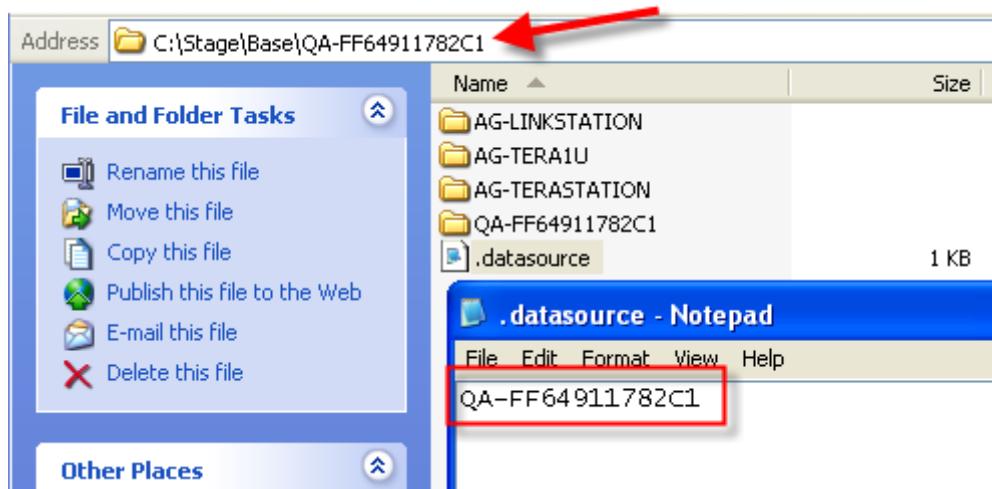
- Before you click OK, go to the Staging tab and configure the staging folder (the folder must exist first), and Select the checkbox to write the backup to the staging folder.



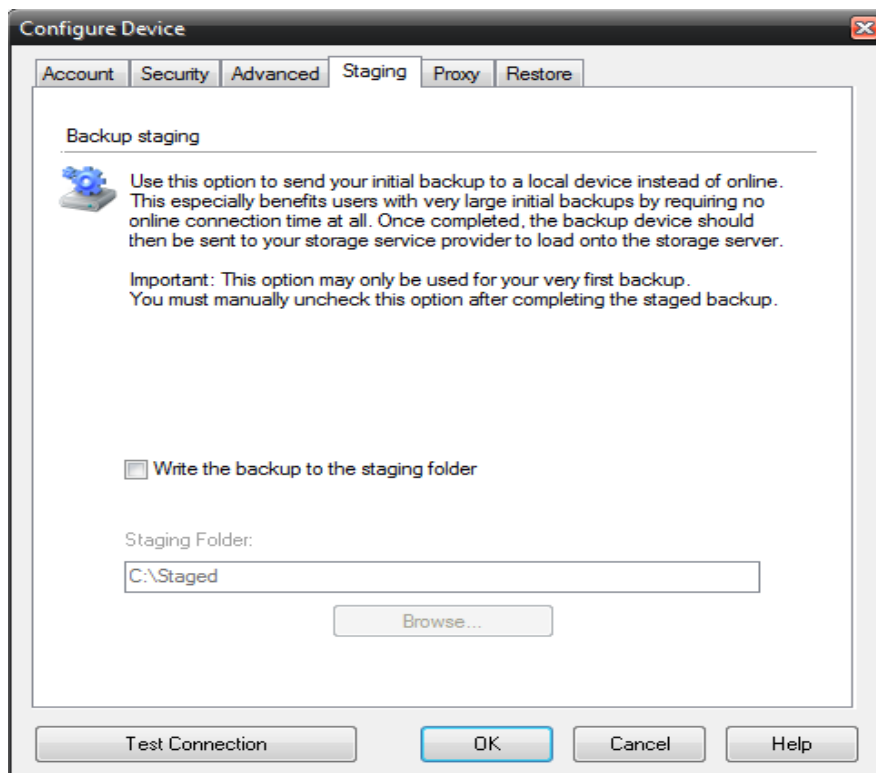
- Click [Test Connection] to verify and [OK] to accept the changes and continue to add the xSP device.
- Your first backup should now be going to your staging folder.



7. Make sure the **.datasource** file appears in the staged data and that it contains the computer name where the Staged was performed.



8. **NOTE:** The user must NOT do a backup until the staged backup is imported to the backup server, so disabled any schedules that may be setup for the user.
9. When the import is done on the Storage Server side (before running your second backup), go back to Configure Device and [**UNCHECK**] the staging option below and click [**OK**].

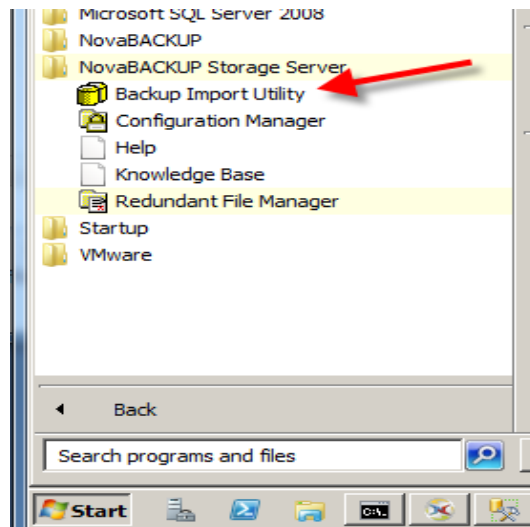


Import

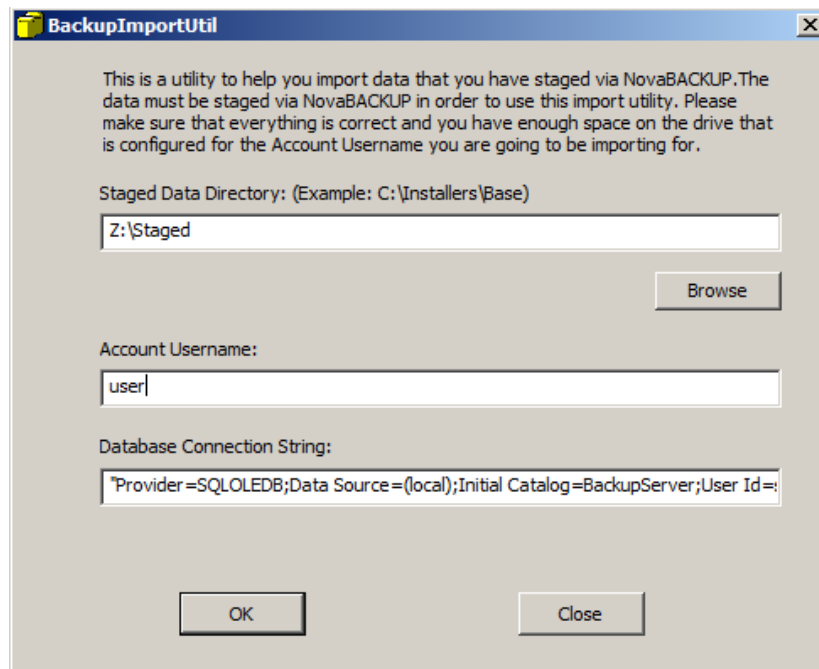
Get the user's staged data on the storage server or accessible to the storage server via UNC path or USB drive.

Backup Import Utility

1. From the Storage Server, [Launch] the Backup Import Utility

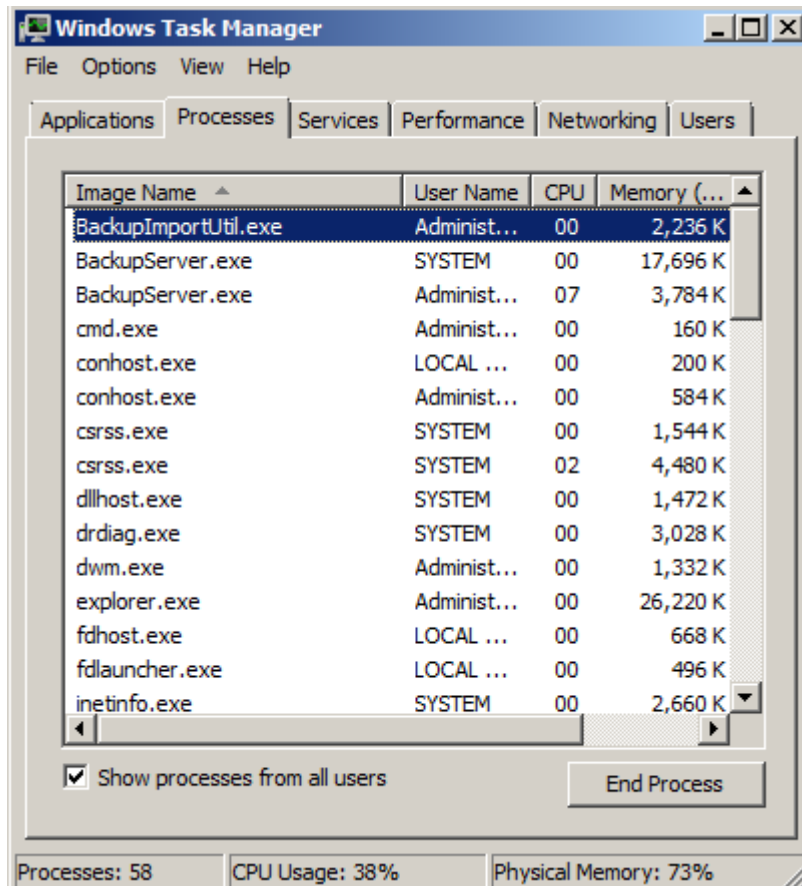


2. Point the user's **BASE** folder and [Enter] the account username

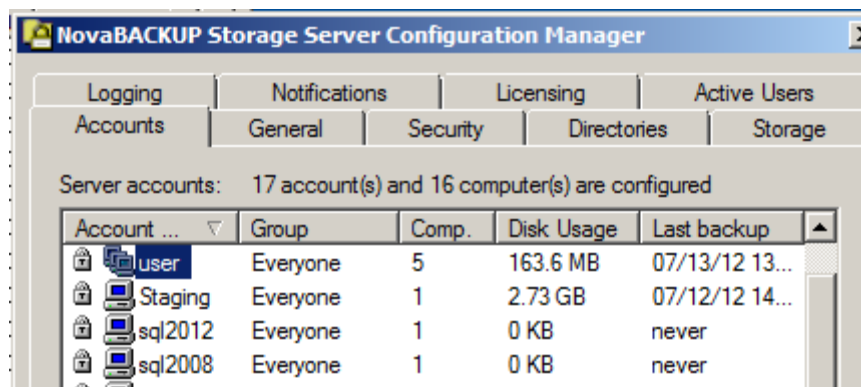


3. Click [OK] to start importing the staged backup to the Storage Server.

NOTE: There is no real 'progress' indicator when the import is done. If you check the windows task manager, you will see another copy of BackupServe.exe running. One of them will close when the import is done.

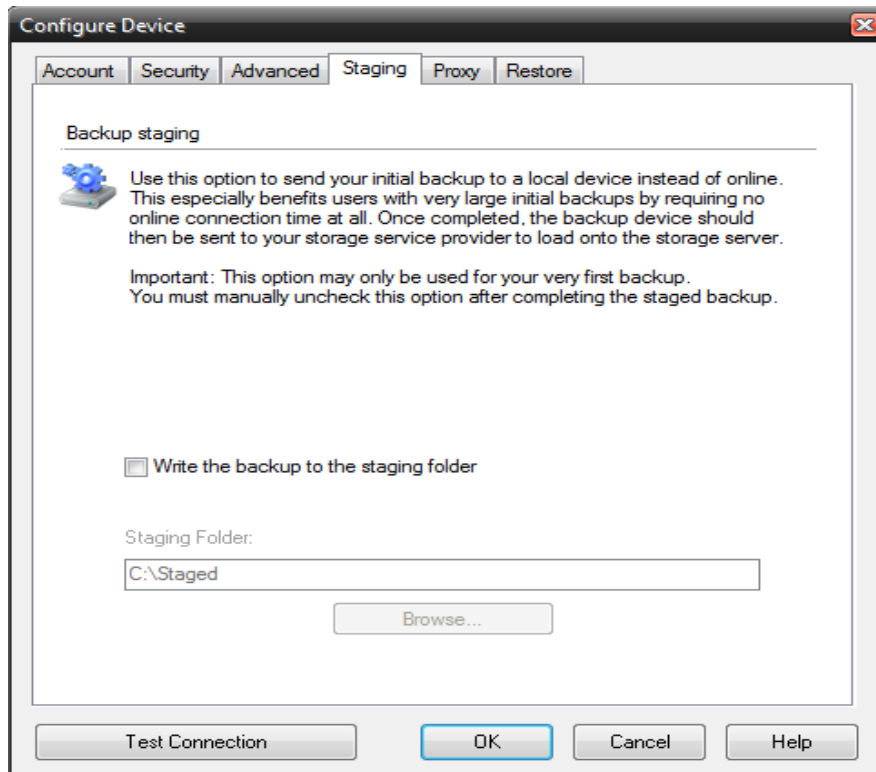


4. After the import is done, **[Close]** the Import utility and go to the Configuration Manager to verify the user's Disk Usage.



Complete

Congratulations! You have now finished running a Stage backup and Import process for the user. At this point the client software can do backups and restores from the storage server. Make sure to uncheck the 'Write the backup to the staging folder' on the client side before the user performs its next backup (Step 9).



Contact Us

NovaStor Software AG

Baarerstrasse 20CH-6304
Zug, Switzerland
Tel +41 (41) 712 31 55
Fax +41 (41) 712 21 56

NovaStor Corporation

29209 Canwood St.
Agoura Hills, CA 91301 USA
Tel +1 (805) 579 6700
Fax +1 (805) 579 6710

NovaStor GmbH

Neumann-Reichardt-Str. 27-33
D-22041 Hamburg, Germany
Tel +49 (40) 638 09 0
Fax +49 (40) 638 09 29

Notice

Information in this document is subject to change without notice. NovaStor makes no representations or warranties with respect to the contents of this document and specifically disclaims any implied warranties of merchantability or fitness for any particular purpose. Further, NovaStor reserves the right to revise this publication and to make changes without obligation to notify any person or organization of such revisions or changes.

Copyright

Under copyright laws, the contents of this document may not be copied, photocopied, reproduced, translated or reduced to any electronic medium or machine-readable form, in whole or in part, without prior written consent of NovaStor.

Trademarks NovaBACKUP® is a registered trademark of NovaStor. Windows® is a registered trademark of Microsoft Corporation.