



NOVASTOR CORPORATION

Custom Client Specification

Updated for NovaBACKUP 11.0

© 2009 NovaStor, all rights reserved. All trademarks are the property of their respective owners. Features and specifications are subject to change without notice. The information provided herein is provided for informational and planning purposes only.

Introduction

This document describes the variables, bit image files, documents and text that are required from a vendor by engineering for the process of re-branding NovaStor Backup Software

Custom Client Specification

Company and Product Information

Full company name - Example: NovaStor Corporation
Short company name - Example: NovaStor
Product name (limited to 20 characters) - Example: NovaBACKUP
Product prefix (2 characters) - Example: Ns
Program .exe name (No .exe at the end, limited to 20 characters) - Example: NovaBackX

Global Variables

Web Links Change (under Help/On The Web menu command)

Company URL - Example: http://www.novastor.com
Register URL - Example: http://www.novastor.com/register
Product info URL - Example: http://www.novastor.com/novabackup
Contact support URL - Example: http://www.novastor.com/support
Customer center URL - Example: http://www.novastor.com/login.asp
Purchase URL - Example: http://www.novastor.com/novabackup/buy.html
Updates URL - Example: http://www.novastor.com/backups
Registration URL - Example: http://ws02.novastor.com/backup_storage_comerce_server
Upgrade URL - Example: http://ws02.novastor.com/application_update/servise.asmx

Legal, Copyright, and Application-level

Copyright - Example: Copyright 2009

Support Info - Example: 805-579-6700 or support@novastor.com

xSP specific variables

NovaNet-WEB Server - Example: ws02.novastor.com

NovaNet-WEB URL - Example: http://ws02.novastor.com/backup_storage_commerce_server

*If the NovaNet-WEB Server address is entered this value is pre-filled into the client when built. This means if you choose not to use the Commerce Server to provision your users, the configuration screen to enter the user and password will come up and allow the user to enter these details.

**The NovaNet-WEB URL is the URL to the Commerce Server for provisioning. If this is not filled in, the user will be able to select the xSP device and fill in the user and password values for their connection manually.

Language Change

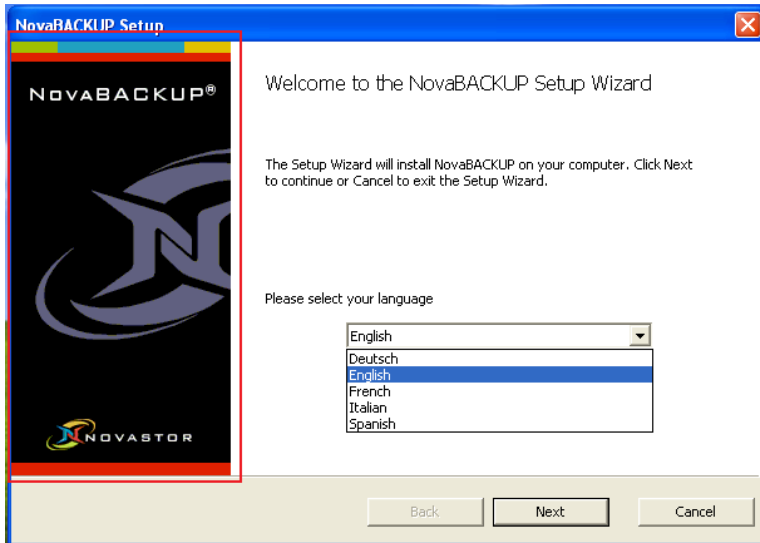
Language	Suffix	Vendor
English	E	<input type="checkbox"/> Yes <input type="checkbox"/> No
French	F	<input type="checkbox"/> Yes <input type="checkbox"/> No
German	G	<input type="checkbox"/> Yes <input type="checkbox"/> No
Italian	I	<input type="checkbox"/> Yes <input type="checkbox"/> No
Spanish	S	<input type="checkbox"/> Yes <input type="checkbox"/> No

Installer/Program Artwork Change

You can download example graphics at the following location:

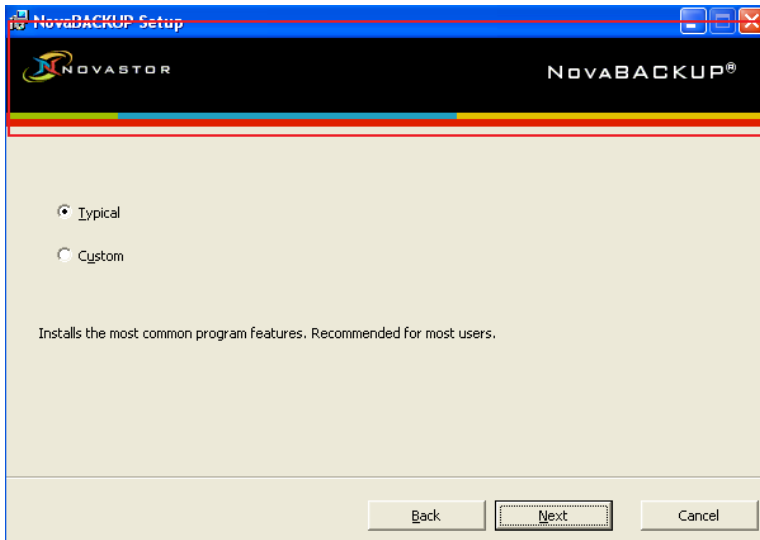
http://filestore.novastor.com/Downloads/NNW/v10/10.3.15/Example_Customization_Graphics.zip

Installer left side image - Example: oem_banner_left.bmp; 175x320, 72 DPI, BMP



Installer top right image - Example: oem_setup_header.bmp; 600x70, 72 DPI, BMP

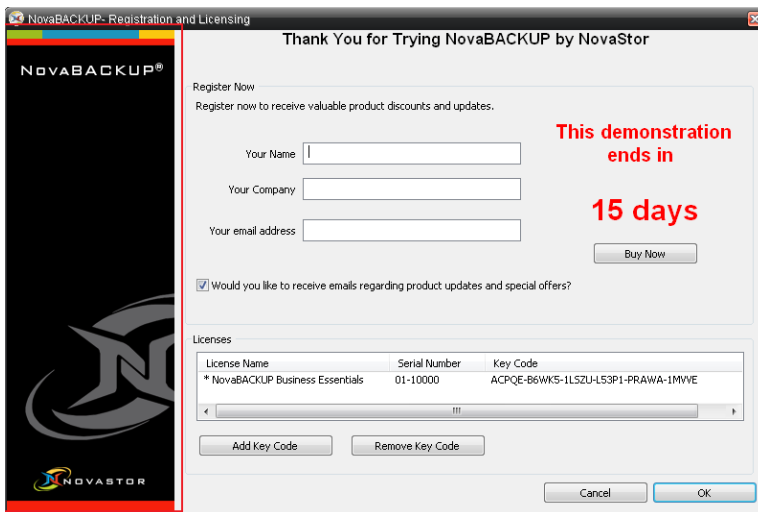
Installer setup page - Example: oem_setup_page_.bmp; 600x346, 72 DPI, BMP



Splash/launch screen - Example: oem_splash.bmp; 602x441, 72 DPI, BMP



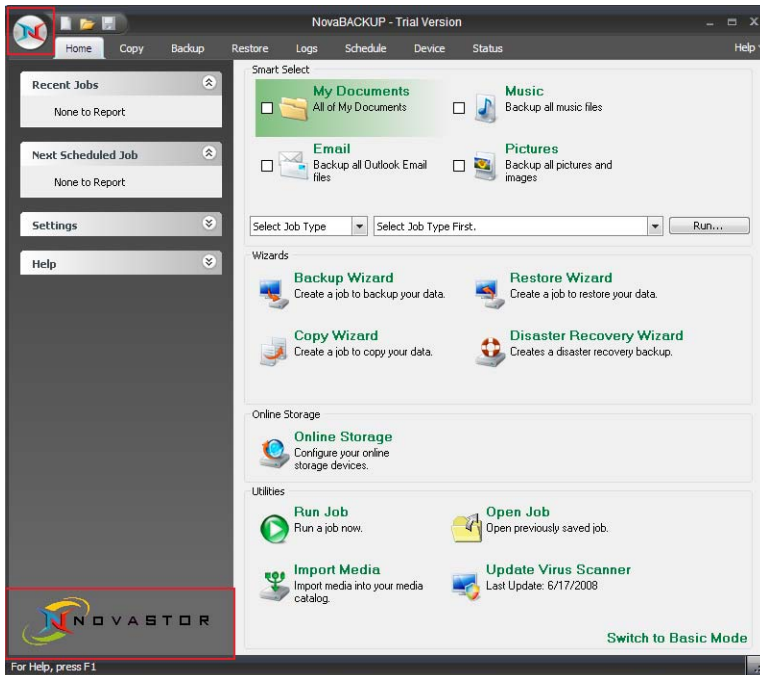
Registration/about box image - Example: oem_long_banner_left.bmp; 175x500, 72 DPI, BMP



Upper left logo overlay (use transparent background) - Example: oem_logo.png 24x24, 72 DPI, PNG

Bottom-left panel image (company logo*) - Example: oem_bottomleft.bmp; 233x60, 72 DPI, BMP

* The background color of a company logo has to be a solid color in RGB (255:0:255). This part will become transparent after integration with the software UI.



Program icon - Example: oem_icon.ico; Multi-formats (16x16, 24x24, 32x32, 48x48, 64x64), 96 DPI, ICO

Tray icon - Example: oem_logo.ico; 24x24, 96 DPI, ICO

Animated tray icon (For when program is doing something such as a backup. Up to 4 icons to show animation) - Example: oem_logo_ani_1.ico; oem_logo_ani_2.ico; oem_logo_ani_3.ico ; oem_logo_ani_4.ico; 24x24, 96 DPI, ICO

Status tray icon (Up to 3 icons to show the status of the last operation) - Example: oem_logo_good.ico; oem_logo_warn.ico; oem_logo_error.ico ; 24x24, 96 DPI, ICO