



NovaBACKUP[®] xSP
Version 12.2 Cloud Restore

NovaStor[®] / August 2011
Rev 20110815

© 2011 NovaStor, all rights reserved. All trademarks are the property of their respective owners. Features and specifications are subject to change without notice. The information provided herein is provided for informational and planning purposes only.

Contents

NovaBACKUP xSP Cloud Restore Information	2
Intended Audience	2
Upgrade Paths	2
What is Cloud Restore	3
Preparing for the Installation	3
Requirements	3
Web Server:	3
Client:	3
Installation and Setup	4
Using Cloud Restore	4
Troubleshooting:	7

NovaBACKUP xSP Cloud Restore Information

This document will provide the prerequisites, installation, and application use information. This information is intended to be a guide for Administrators of a NovaBACKUP xSP 12.2 implementation who are offering Cloud Restore to their customers

INTENDED AUDIENCE

This document is intended for existing administrators of NovaBACKUP® xSP Storage Server environments running version 12.2 and above who have experience in administering and troubleshooting IIS in a Microsoft Windows Server environment.

UPGRADE PATHS

This application is a replacement for the NovaNet-WEB Web Based Restore (WBR) application.

What is Cloud Restore

Cloud Restore is a web-based application that replaces the Web Based Restore (WBR) and allows an xSP user to restore data from their hosted storage server account without the use of locally installed client software.

Preparing for the Installation

For your customers to use the Cloud Restore application, they will need to access the web client from the Internet. NovaStor recommends setting up a webpage that may contain the following information:

- Hyperlink to launch Cloud Restore
- IP Address or URL of the Storage Server the customer will connect to

You are welcome to edit the HTML of the Index.htm to present the Storage Server IP/URL to the customer. It is recommended that this task be handled by an experienced web developer, as making changes to this file may result in the application not being able to be launched from the Index page.

Requirements

WEB SERVER:

Microsoft IIS6
Microsoft IIS7 with IIS6 Compatibility
.NET 3.5 or greater

CLIENT:

Internet Explorer 7, 8 or 9
High speed internet connection (recommended)

Installation and Setup

Download the Cloud Restore zip file from the <http://NovaStor.com/download> page.

Extract the contents of the file to the desired directory on your IIS web server, the root of C:\ should be alright.

Open your IIS management console on the server.

Create a virtual directory for the Cloud Restore.

- [How to create a virtual directory in IIS6](#)
- [How to create a virtual directory in IIS7](#)

During the creation of the Virtual Directory, you will be asked to specify the directory for your website. Ensure you are pointing to the directory where you extracted the Cloud Restore.

When finished, restart the website in IIS.

Test by connecting to the Cloud Restore application: **Error! Hyperlink reference not valid.>**

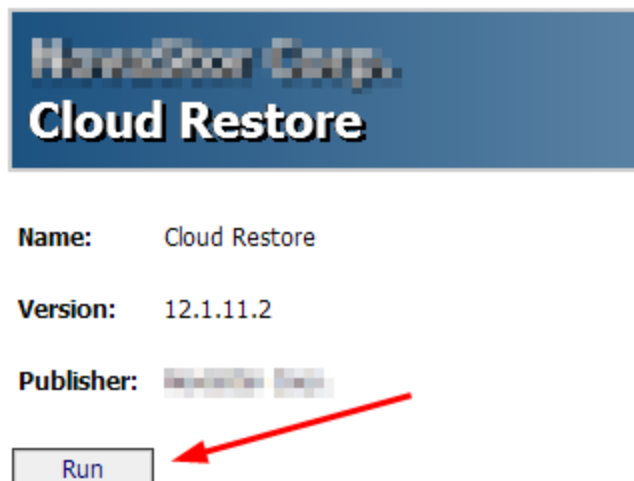
Using Cloud Restore

In order to use the Cloud Restore application, the user must:

- Be using Internet Explorer 7, 8 or 9.
- Have an internet connection (high speed preferably)

Navigate to the Cloud Restore URL for your service provider.

Click the **[Run]** button when it appears.



After the application downloads, you will be presented with the “Login” screen for the Cloud Restore application.

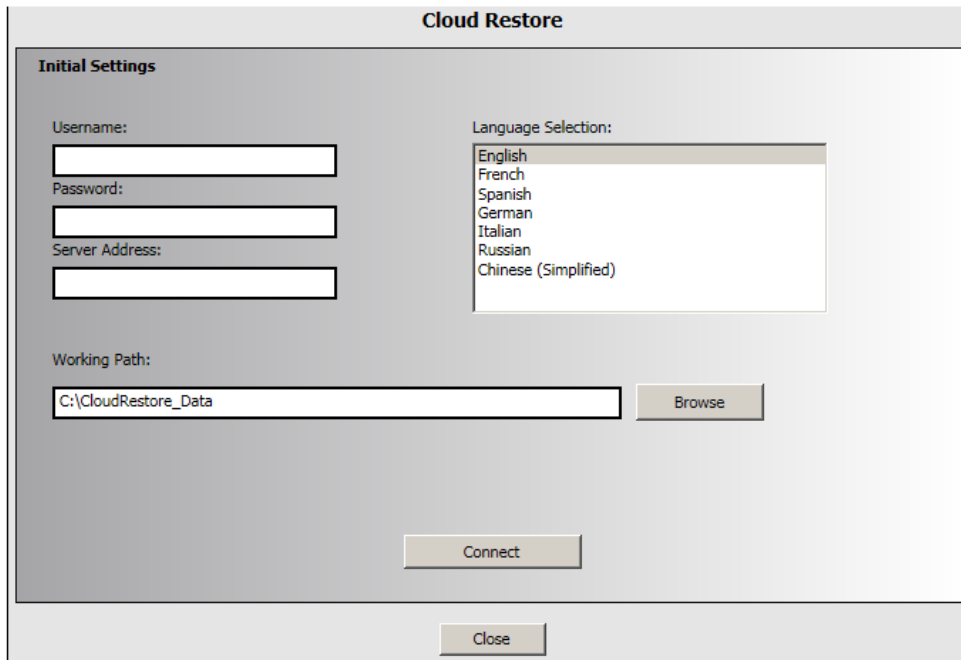
Enter the following information into the form

:

- **Username:** Your online storage Username
- **Password:** Your online storage Password
- **Server Address:** The IP Address / URL of the online storage service
- **Working Path:** The directory path where you would like to save the files

Select the Language you prefer from the list on the right.

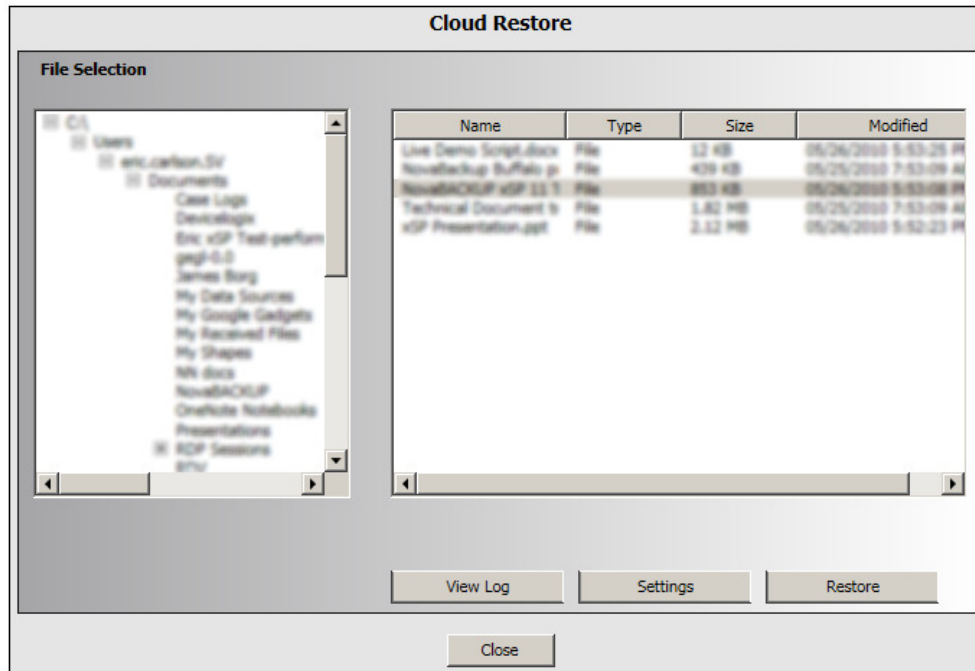
Click [**Connect**]



The screenshot shows a dialog box titled "Cloud Restore" with a section for "Initial Settings". It contains the following fields and controls:

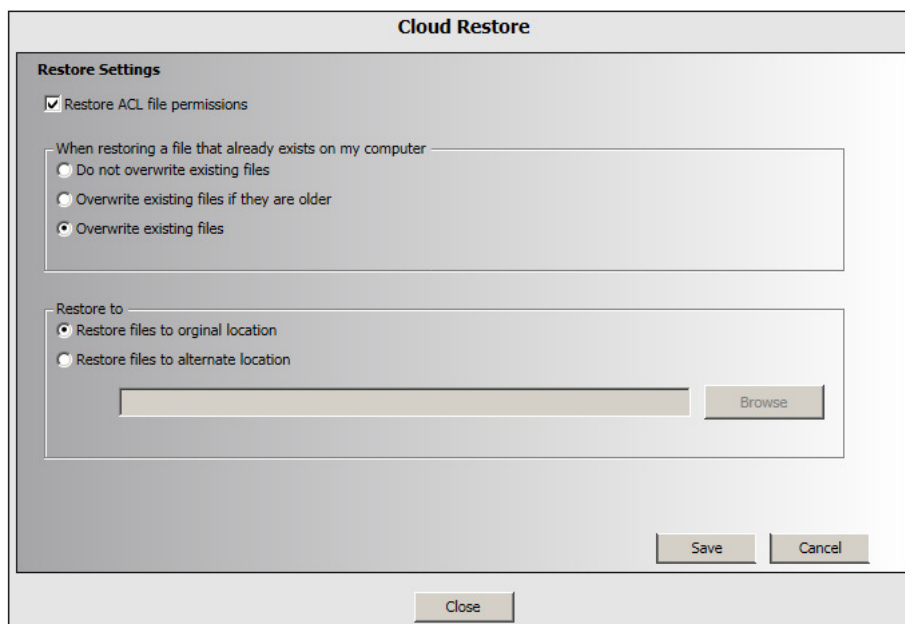
- Username:** A text input field.
- Password:** A text input field.
- Server Address:** A text input field.
- Language Selection:** A list box containing the following options: English, French, Spanish, German, Italian, Russian, and Chinese (Simplified).
- Working Path:** A text input field containing "C:\CloudRestore_Data" and a "Browse" button to its right.
- Connect:** A button located at the bottom center of the dialog.
- Close:** A button located at the bottom center of the dialog, below the "Connect" button.

Note: Depending on the number of files you have in storage, downloading and populating the File Selection list may take a few minutes.



Select the files and/ or folders you wish to restore from the File Selection screen.

Click the **[Settings]** button to modify the restore settings.



Click **[Restore]** when you are ready to restore your files.

Troubleshooting:

Path Error: Could not find a part of the path '<specified path>\TestFile.txt'

The Cloud Restore application will attempt to place a text file to validate the selected directory. Use the **[Browse]** button to select the destination directory.

An error occurred in the application you were using.

Open the Internet Options of Internet Explorer, and add the Cloud Restore URL to the Trusted Sites.

Filename: NovaBACKUP xSP 12.2 Cloud Restore 20110815.docx
Directory: \\si-fileserver\Engineering\Tech Support\Release
Documentation\NovaBACKUP xSP\12.2
Template: C:\Users\eric.carlson.SV\AppData\Roaming\Microsoft\Templates\
Normal.dotm
Title:
Subject:
Author: tatjana
Keywords:
Comments:
Creation Date: 8/15/2011 3:24:00 PM
Change Number: 2
Last Saved On: 8/15/2011 3:24:00 PM
Last Saved By: Kristin Tinsley
Total Editing Time: 1 Minute
Last Printed On: 8/15/2011 4:54:00 PM
As of Last Complete Printing
Number of Pages:8
Number of Words:827 (approx.)
Number of Characters: 4,719 (approx.)